

# ***EPRO Series Systems***

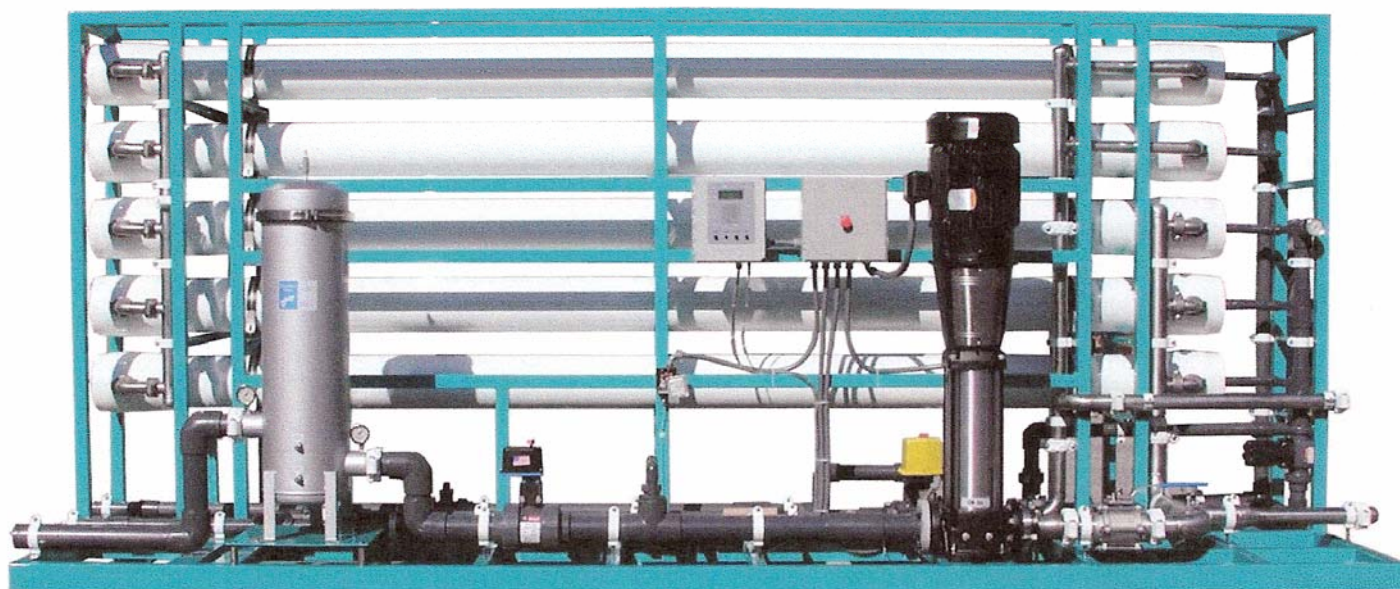
## ***Industrial Reverse Osmosis Systems***

***31,000 to 144,000 Gallons Per Day***

### **MODEL EPRO-144K**

144,000 GPD of High Purity Water

*\*Shown with options*



***US Engineered Products Inc.***  
***300 Old Reading Pike***  
***Stowe, PA 19464***

*Products and Services for the Water Treatment Industry*

*Phone: 610-327-1965 Fax: 610-906-1520 Email: [usengineeredpro@comcast.net](mailto:usengineeredpro@comcast.net)*

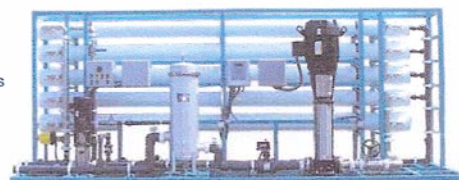
**EPRO Series Industrial Reverse Osmosis Systems 31K to 144K GPD****STANDARD FEATURES:**

Flow Meters: Concentrate & Permeate (Digital)  
 Grundfos CR-Series 304 SS Pump w/TEFC Motor  
 Membranes: 8"x40", TFC Brackish Water  
 FRP Side-ported, 300 psi Pressure Vessels  
 Low Pressure Switch  
 Voltage: 460V/60Hz/3 Phase  
 Prefilter Housing: 316SS w/ 5 micron cartridges  
 Pressure Gauges: 2.5" Dia., 316SS, Pre & Post-filter,  
 Pump Discharge, Concentrate, Permeate  
 Automatic Inlet Feedwater Valve  
 316SS High Pressure Valves (Concentrate, Recycle)  
 Flow Meters: Concentrate & Permeate (Digital)  
 Programmable Electronic Control Box  
 Automatic Fast Flush  
 TDS Monitor  
 Concentrate Recycle Loop  
 Sample Valves  
 Cleaning Ports  
 High Pressure Piping: 316SS  
 Low Pressure Piping: Sch80 PVC

**OPTIONAL FEATURES:**

380V/50Hz  
 Anti-Scalant Dosing System  
 Chlorination Dosing System  
 De-Chlorination Dosing System  
 Acid Dosing System  
 pH Elevation Dosing System  
 pH Monitor/Controller  
 ORP Monitor/Controller  
 Upgrade Pump from 304SS to 316SS  
 "Cold Water" Membranes  
 Recycle Flow Meter  
 Integrated Cleaning Station, with tank off the skid (CIP)  
 Nanofiltration membranes are available  
 High Pressure Switch  
 Single Powered Point

**MODEL**  
**EPRO-144K**  
 \*Shown with options

**SYSTEM SPECIFICATIONS:**

| Model     | Production* |         | M <sup>3</sup> /D | Maximum<br>3rd Year<br>Operating<br>Pressure (psi) | Inlet<br>Size | No. of 8"x40"<br>Elements | Designed<br>Recovery<br>(without<br>recycle) | MOTOR HP<br>(3 phase): |                  |
|-----------|-------------|---------|-------------------|--|---------------|---------------------------|--|------------------------|------------------|
|           | GPM         | GPD     |                   |  |               |                           |  | 60Hz<br>230/460V       | 50Hz<br>380/415V |
| EPRO-31K  | 22          | 31,680  | 120               | 214  | 2"            | 4                         | 55-75%                                       | 10                     | 10               |
| EPRO-43K  | 30          | 43,200  | 164               | 208  | 2"            | 6                         | 55-75%                                       | 10                     | 15               |
| EPRO-57K  | 40          | 57,600  | 218               | 224  | 2"            | 8                         | 65-75%                                       | 15                     | 15               |
| EPRO-72K  | 50          | 72,000  | 273               | 204  | 2"            | 10                        | 55-75%                                       | 20                     | 20               |
| EPRO-86K  | 60          | 86,400  | 327               | 215  | 2"            | 12                        | 65-75%                                       | 20                     | 25               |
| EPRO-108K | 75          | 108,000 | 409               | 212  | 3"            | 16                        | 65-75%                                       | 25                     | 25               |
| EPRO-144K | 100         | 144,000 | 545               | 214  | 3"            | 20                        | 65-75%                                       | 25                     | 30               |

\*Based on feed water with TDS of 1500 ppm and temperature of 25°C (77°F)

**WEIGHTS & DIMENSIONS:** (Optional Features may increase dimensions)

| Model     | Approximate Shipping Dimensions |                  |                   |                    | Approximate Unit Dimensions |                  |                   |                    |
|-----------|---------------------------------|------------------|-------------------|--------------------|-----------------------------|------------------|-------------------|--------------------|
|           | Length<br>(in/cm)               | Width<br>(in/cm) | Height<br>(in/cm) | Weight<br>(lbs/kg) | Length<br>(in/cm)           | Width<br>(in/cm) | Height<br>(in/cm) | Weight<br>(lbs/kg) |
| EPRO-31K  | 208/528                         | 62/158           | 96/244            | 2250/1013          | 192/488                     | 54/137           | 60/152            | 2300/1035          |
| EPRO-43K  | 208/528                         | 62/158           | 96/244            | 2600/1170          | 192/488                     | 54/137           | 60/152            | 2350/1058          |
| EPRO-57K  | 208/528                         | 62/158           | 96/244            | 3200/1440          | 192/488                     | 54/137           | 60/152            | 2900/1305          |
| EPRO-72K  | 208/528                         | 62/158           | 96/244            | 3450/1553          | 192/488                     | 54/137           | 60/152            | 3100/1395          |
| EPRO-86K  | 208/528                         | 62/158           | 96/244            | 4150/1868          | 192/488                     | 54/137           | 60/152            | 3800/1710          |
| EPRO-108K | 208/528                         | 62/158           | 96/244            | 4700/2115          | 192/488                     | 54/137           | 84/214            | 4300/1935          |
| EPRO-144K | 208/528                         | 62/158           | 96/244            | 5900/2655          | 192/488                     | 54/137           | 84/214            | 5500/2493          |

**US Engineered Products Inc.**

300 Old Reading Pike

Stowe, PA 19464

Products and Services for the Water Treatment Industry

Phone: 610-327-1965 Fax: 610-906-1520 Email: [usengineeredpro@comcast.net](mailto:usengineeredpro@comcast.net)